
Universal timer UT 7-L

- Variable usable coin timer
- LED display, 4 digits
- Fully-electronic maintenance free coin validation of up to 11 coin types
- Inputs for start and stop function
- Input to select the 2. price
- Key switch for free using (option)
- External key to switch on the connected device for 5 seconds
- Acoustic signal at the last minute (option)
- Two independent relay changeover contacts with 16A
- Credit time digital adjustable (2 prices)
- Two display modes: remaining time / remaining credit
- Coining after-throw any time possible (adjustable)
- Coin set free programmable
- Electronic cash audit with a separate counter for token
- Made in Germany



The universal timer UT 7-L serves as variable time sales device in dependence of the thrown-in money. It is usable for solariums, showers, vacuum cleaners, washing machines, car-washes etc.

The timer has a memory, in which all data and settings are saved. These data are still saved also without operating voltage. After power on, the timer loads the data from this memory.

Technical data - UT 7-L

General

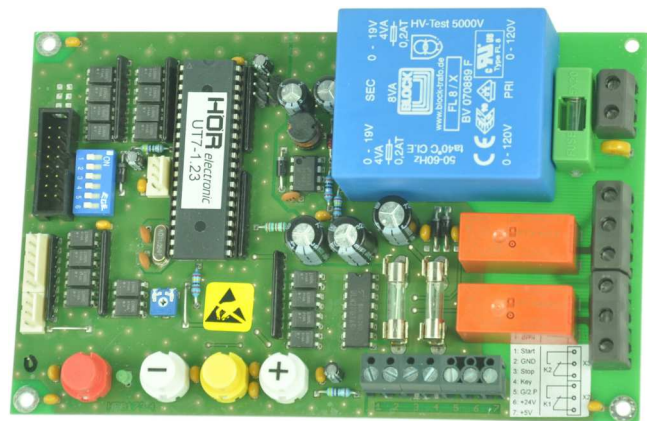
- Robust steel housing with security lock (high-grade steel housing optional)
- Coin box with capacity of 1,0 l
- Dimensions in mm: 160 (W) x 350 (H) x 155 (D)
- Colour: RAL 9002 (light-grey)
- Weight: 3,1 kg
- Safety class: I
- Type of protection: No moisture proofing, enclosed design
- Ambient temperature: +0..60°C
- Humidity: 10..90% non-condensing

Connection data

- Operating voltage: 220-240V AC, 50-60Hz, 8VA
or 24V AC/DC, 350mA
or 12V AC/DC, 700mA
- Switching power K1: 250V AC/16A
or 30V DC/16A
- Switching power K2: 250V AC/16A
or 30V DC/16A
- Electrical safety: CE-sign

Control board

- Two Relays: credit relay (K1) and additional relay (K2)
- Modern switched mode power supply
- Alternatively deliverable for coin validator NRI G13 (12V) or MARS CashFlow® 330 (Standard 124: 24V)
- Four programming keys (Ⓜ ⊖ ⊕ ⊕)
- Connection for LED display
- Connection for start and stop key
- Connection for key switch (free using)
- Connection for an additional channel for coins/notes or for selection of the 2. price
- Connection for serial interface
- All inputs and outputs galvanic isolated
- Power fail indication for automatic saving all settings and data in the EEPROM



Settings

- All adjustments are carried out about the four programming keys and the LED display
- Credit time: Two different prices adjustable (respectively price, time & min. credit)
- Waiting time: 0s till several hours
- Tracking time: 0s till several hours
- Display mode: Remaining time or remaining credit
- Different operating modes for the start and the stop input
- Different operating modes for the additional relay K2
- Access code for the settings (off / 0..9999)

Coin validator

- Brands coin validator CashFlow® 330
- Acceptance of up to 11 coin types, token or combinations (e.g. 5c / 10c / 20c / 50c / 1€ / 2€ or other currencies and combinations)
- Non-jamming electronic coin validation without moving parts
- Fixed programming of the accepted coins or token needs no calibration
- Optimal foreign coin rejection by using electronic measurement system
- Single coins blockable
- Other coin set is programmable on the spot with software download (without throwing-in coins)