

Universal timer UT 8

- Variable usable coin timer
- LCD display, alphanumeric, 2x16 signs
- Fully-electronic maintenance free coin validation of up to 11 coin types
- Inputs for start and stop function
- Input to select the 2. price
- Key switch for free using (option)
- External key to switch on the connected device for 5 seconds
- Acoustic signal at the last minute (option)
- Two independent relay changeover contacts with 16A
- Credit time digital adjustable (2 prices)
- Happy hour function (2. price) with optional real time clock
- Two display modes: remaining time / remaining credit
- Coining after-throw any time possible (adjustable)
- Coin set free programmable
- Electronic cash audit with a separate counter for token
- Made in Germany



The universal timer UT 6 serves as variable time sales device in dependence of the thrown-in money. It is usable for solariums, showers, vacuum cleaners, washing machines, car-washes etc.

The timer has a memory, in which all data and settings are saved. These data are still saved also without operating voltage. After power on, the timer loads the data from this memory.

With alphanumeric LCD display all settings and counter readings are very simple and comfortable.

Technical data - UT 8

General

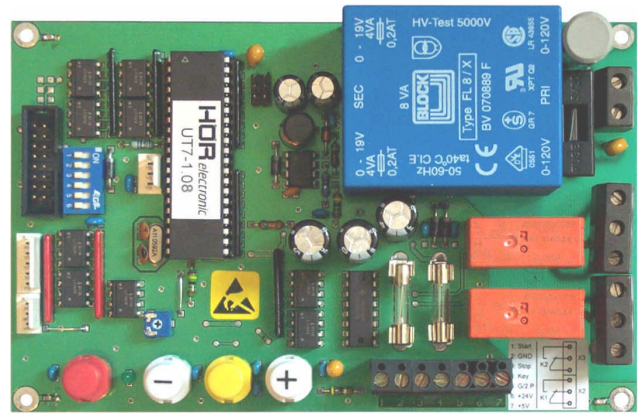
- Robust steel housing with safety lock, shaft-locking and lockable coin box (1,5l)
- Optional deliverable: big coin box; security coin box
- Dimensions in mm: 250 (B) x 350 (H) x 100 (T)
- Colour: RAL 9002 (light-grey)
- Weight: 7,2 kg
- Safety class: I
- Type of protection: No moisture proofing, enclosed design
- Ambient temperature: +0..60°C
- Humidity: 10..90% non-condensing

Connection data

- Operating voltage: 220-240V AC, 50-60Hz, 8VA
or 24V AC/DC, 350mA
or 12V AC/DC, 700mA
- Switching power K1: 250V AC/16A
or 30V DC/16A
- Switching power K2: 250V AC/16A
or 30V DC/16A
- Electrical safety: CE-sign

Control board

- Z Two Relays: credit relay (K1) and additional relay (K2)
- Modern switched mode power supply
- Alternatively deliverable for coin validator NRI G13 (12V) or MARS CashFlow® 330 (Standard 124: 24V)
- Four programming keys (⊕ ⊖ ⊗ ⊕)
- Connection for LCD display with 2x16 signs
- Connection for start and stop key
- Connection for key switch (free using)
- Connection for an additional channel for coins/notes or for selection of the 2. price
- Connection for serial interface or real time clock
- All inputs and outputs galvanic isolated
- Power fail indication for automatic saving all settings and data in the EEPROM



Settings

- All adjustments are carried out about the four programming keys and the LED display
- Credit time: Two different prices adjustable (respectively price, time & min. credit)
- Waiting time: 0s till several hours
- Tracking time: 0s till several hours
- Happy hour: start and ending time, arbitrary week-days (only with optional real time clock)
- Display mode: Remaining time or remaining credit
- Different operating modes for the start and the stop input
- Different operating modes for the additional relay K2
- User language (English or German)
- Access code for the settings (off / 0..9999)

Coin validator

- Brands coin validator CashFlow® 330
- Acceptance of up to 11 coin types, token or combinations (e.g. 5c / 10c / 20c / 50c / 1€ / 2€ or other currencies and combinations)
- Non-jamming electronic coin validation without moving parts
- Fixed programming of the accepted coins or token needs no calibration
- Optimal foreign coin rejection by using electronic measurement system
- Single coins blockable
- Other coin set is programmable on the spot with software download (without throwing-in coins)